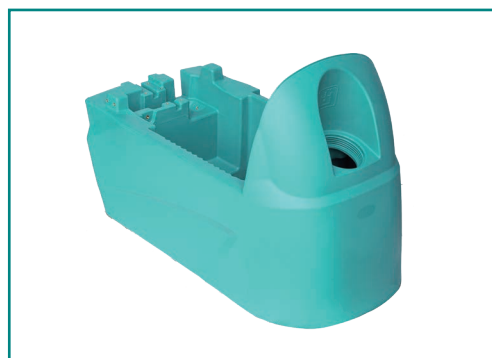




T55 Series Walk Behind Scrubber

Super endurance



55L large-capacity solu-tion tank offers a cleaning width of 510mm



Foot pedal controls the height of brush, which is efficient and convenient



Speed adjustment knob with icon as identification is intuitive and easy to use (T55 BT)



High-quality elastic sealing strip is installed at the edge of the top cover of the recovery tank to improve the tightness and water absorption effect



Stainless steel filter screen blocks impurities in water and prevents waterway blockage. It can be used repeatedly after cleaning



2×12V/100Ah large capacity maintenance free batteries provide the endurance of up to 3.5 hours



- Ergonomic structure makes it comfortable to use
- Equipped with vacuum motor mute system, making the noise of machine even lower
- Quick-mounting design of squeegee and rubber strips usable on four sides, installation and disassembly can be completed instantly without tools
- The splash proof rubber of the brush is designed with elastic tension spring, which saves tools for assembly and disassembly
- Flat bottom of the recovery tank is easy to clean and maintain
- A buckle groove is reserved at the top of the recovery tank for easier maintenance
- The flip water tank is effectively locked with buckles on both sides, making maintenance easier

Parameters

	T55B	T55BT
Volume of solution tank		55L
Volume of recovery tank		65L
Working width		510mm
Squeegee width		780mm
Maximum forward speed		4.5Km/h
Maximum working efficiency	2050m ² /h	2250m ² /h
Brush specification		19 Inches
Brush pressure		35Kg
Rotation speed of brush		180rpm
Driving motor power	/	24V/120W
Brush motor power		24V/500W
Vacuum motor power		24V/390W
Delayed shutdown of vacuum motor		Standard
Battery specification		12V/100Ah×2
Battery duration		3.5h
Battery type		Lead acid (upgradeable to lithium battery)
Battery weight		33Kg×2
Dimension		1300×550×1030mm
Net weight(excluding batteries)	85Kg	92Kg

Application scenarios



Park

Campus

Factory



Supermarket

Hospital

Traffic hub

Accessories



19" Brush
PP0.6



Rubber strip



19" Pad holder (optional)



19" Brush (optional)
PP 0.28

Nanjing TVX Cleaning Equipment Co., Ltd.

- Building 8, Phase 2, Zifeng R&D Center, NO. 121 Baihe Road, Pukou District, Nanjing City, Jiangsu Province, China
- Nanjing TVX Cleaning Equipment Co., Ltd.
- sales@tvxclean.com
- +86 18061203729



Website